



Colin Bray, OSi CEO

*Geospatial & Statistics
collaboration in Ireland*



Ordnance
Survey
Ireland



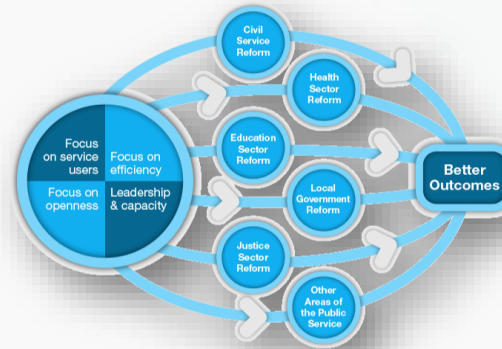
- Ireland's National Mapping Agency
- Established in 1824
- Operates under the Ordnance Survey Ireland Act, 2001
- **Mandate:** *"To provide a national mapping service in the State... creating and maintaining the definitive national mapping and related geographic records"*



- Ireland's National Statistical Office
- Established 1949
- Operates under the Statistics Act, 1993
- **Mandate:** *"The collection, compilation, extraction and dissemination for statistical purposes of information relating to economic, social and general activities and conditions in the State"*



Public Service Reform Plan 2014-2016



Strategic Reforms

- Focus on Service users
- Focus on efficiencies
- Focus on openness
- Leadership & capability

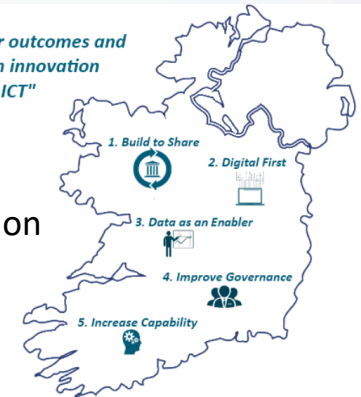


Public Sector ICT Strategy

"Delivering better outcomes and efficiency through innovation and excellence in ICT"

Strategic Pillars

- Build shared infrastructure
- Drive digitisation & innovation
- Support data sharing
- Improve governance
- Increased capabilities





- Organisation Heads met in **September 2016**.
- Discussed our respective **UN activities** and acknowledged the importance of authoritative national statistics data and geospatial **data in Nation Data Infrastructure (NDI)**.
- Conversation about real collaboration, **playing to our organisational strengths, removing duplications** of activities where possible.
- **Made a commitment** in front of senior staff that we would aim to be the **best example of collaboration** between a statistical organisation and a national mapping agency in Europe within 12 months.
- Formalised our organisational commitment in a 3-page Memorandum Of Understanding (**MOU**) in **October 2016**.



OSi/CSO MOU, October 2016

Aim: To establish a closer working relationship to maximise CSO and OSi data and assets for our mutual stakeholders and in support of the Government's Public Sector Reform agenda.

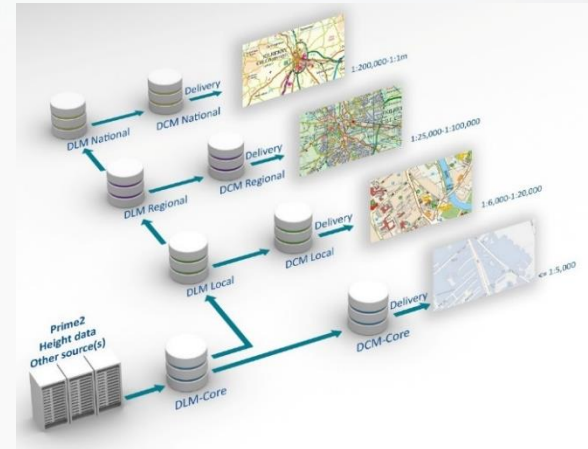
1. Establish joint **CSO/OSi technical working group** to develop data visualisation.
2. Develop technical solution to fulfil Ireland's **reporting responsibilities** under the United Nations 2030 agenda for Sustainable Development.
3. Collaboration in developing **new data dissemination channels**.
4. Promote the **statistical potential of geospatial** data as part of the wider development of the National Data Infrastructure.

What Geospatial/OSi brings to the relationship (1)



Referencing

Authoritative Referencing of geography
(National Object Platform)

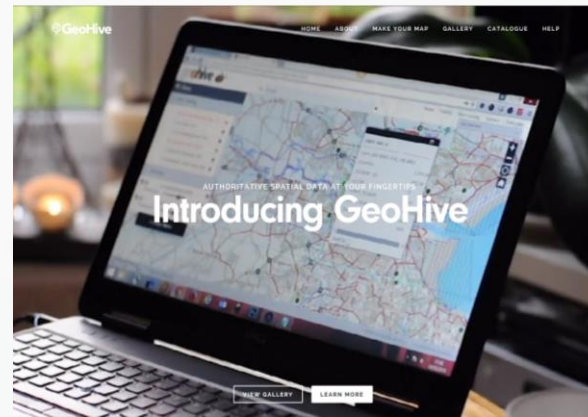


Visualisation

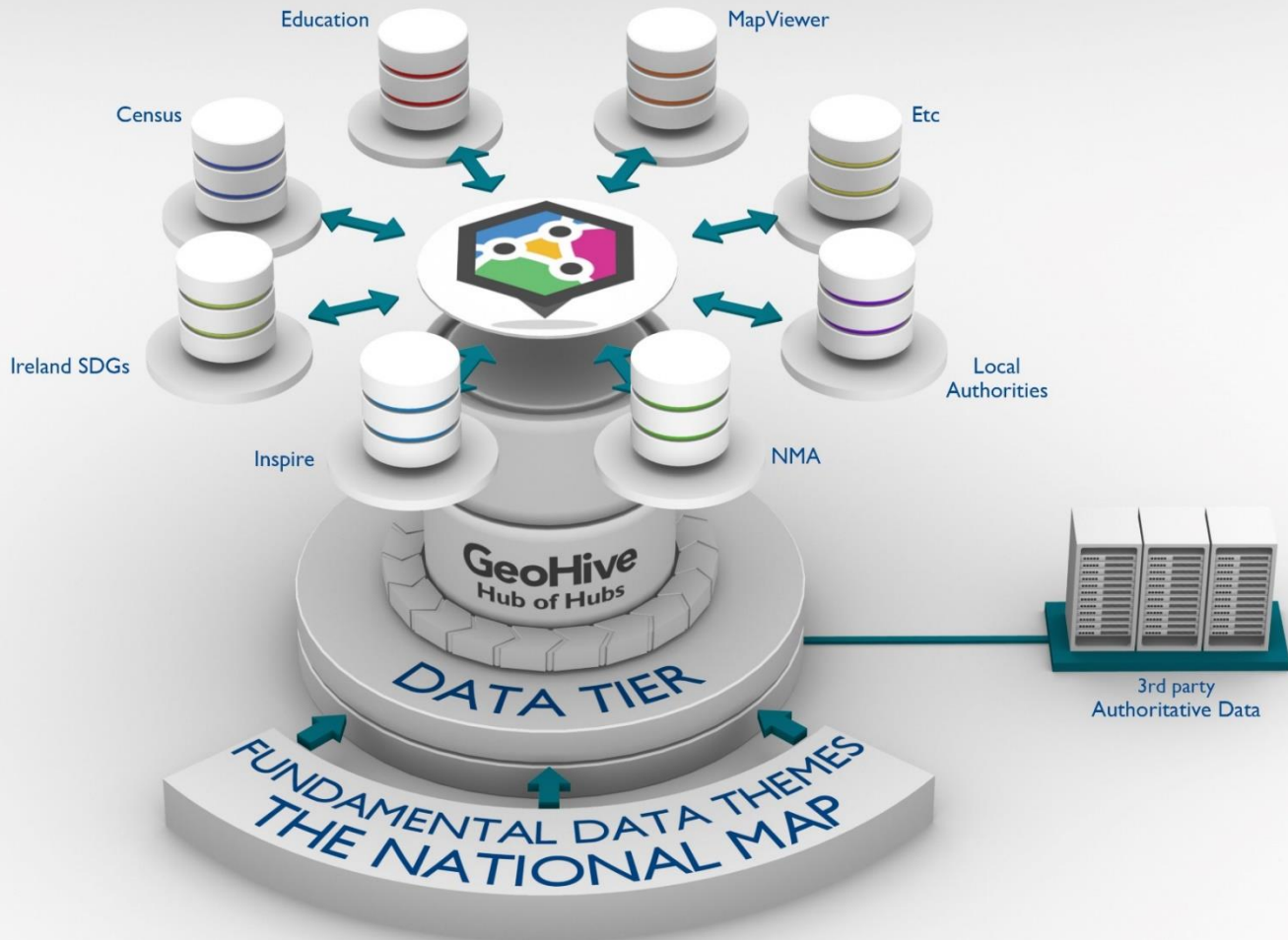
Maintained and consistent Multi-Resolution Data Store

Publishing & Access

National Geospatial Platform
(GeoHive collaborative portal)



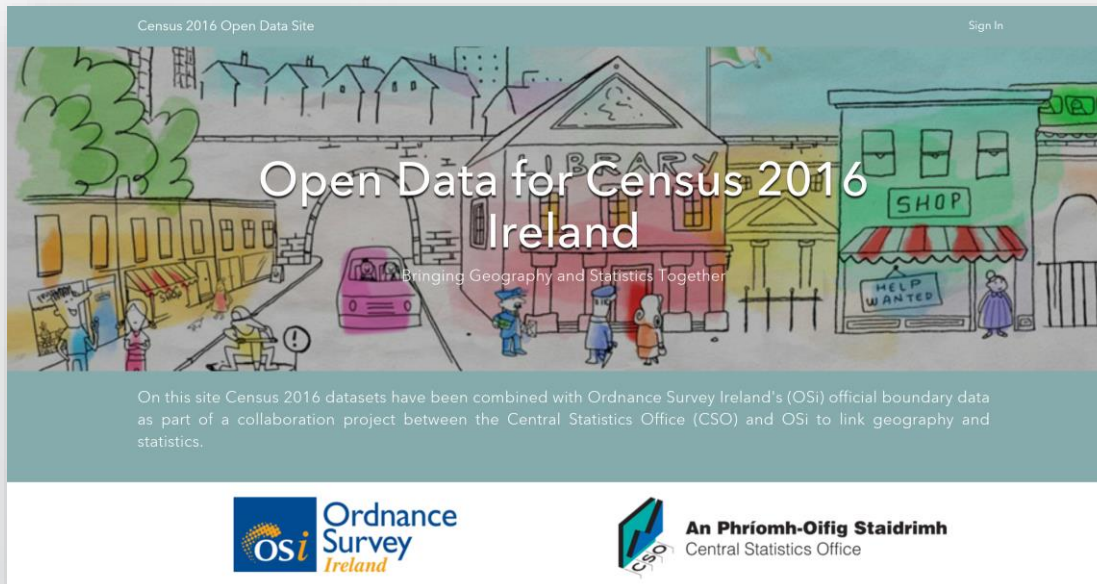
What Geospatial/OSi brings to the relationship (2)





Developed Geospatial portal for Census 2016

- Statistical and boundary data fused together to provide over 500 layers of geo-statistical information.



<http://census2016.geohive.ie/>

**census
2016
RESULTS**



Developed a National Geospatial Linked Data Standard

- 20+ common national datasets as '5 Star' Linked Data
- Publication of 2016 Census data

data.geohive.ie
Serving Ireland's geospatial information as Linked Data.

About the Initiative

The goal of Ordnance Survey Ireland's (OSI) initiative with ADAPT is to develop a platform to publish OSI's geospatial data as Linked Data on the Web whilst adhering to best practices in the domain of geospatial information. The publication of Linked Data enables third parties to explore and consume rich data in a meaningful manner via a combination of simple, standardized technologies (e.g., RDF and URI) that operate over the Web's existing HTTP infrastructure.

[View details >](#)

Download and Query

Ordnance Survey Ireland's geospatial data is available both via Triple Pattern Fragments Server and web client, a Linked Data frontend (e.g., by following the HTTP URI of County Dublin) and as downloadable datasets for local use.

[View details >](#)

Contact and Legal

Contact us:

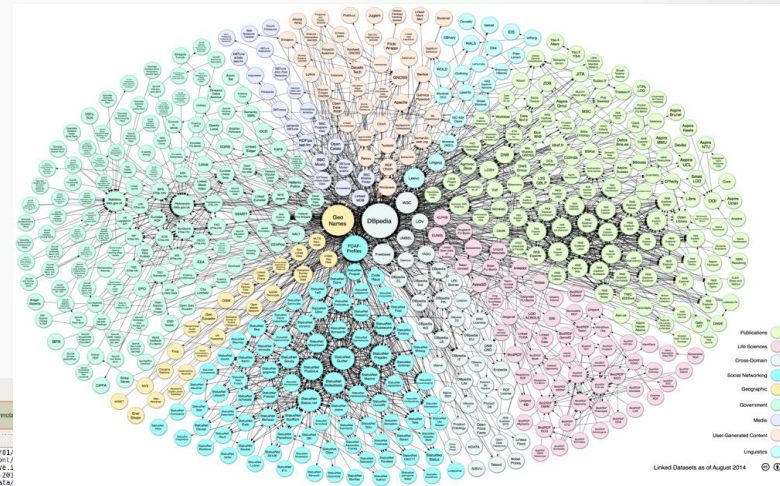
- Corporate
- GeoHive

Or send us an email via geohive@osi.ie.

Legal:

- Corporate
- Privacy
- Terms of Use

Logos for Ordnance Survey Ireland, GeoHive, and Trinity College Dublin are visible at the bottom.



STISPARQL Endpoint

On this page you can execute SPARQL queries against the Stratos backend. The acquired data is then served via the Stratos client.

You must be logged in to perform complex queries, or run in localhost.

Discovery Queries:

- Find all triples in the dataset.
- Select all distinct subjects that appear in the dataset.
- Select all distinct predicates that appear in the dataset.
- Select all distinct objects that appear in the dataset.
- Find all distinct concepts of the dataset.
- Find the number of triples that appear in the dataset.
- Present the first ten topics of the dataset.

SPARQL Query:

```
PREFIX rdfs: <http://www.w3.org/2000/01/rdf-schema#>
PREFIX geo: <http://www.opengis.net/ont/geosparql#>
PREFIX osi: <http://ontology.geohive.ie/ontology#>
PREFIX ir: <http://data.cso.ie/census-2011/ontology#>
PREFIX sd: <http://purl.org/linked-data/sd#>

SELECT DISTINCT * WHERE {
  ?uri rdfs:label ?label .
  FILTER ( lang(?label) = 'en' )
  ?uri <http://open.vocab.org/terms/similarTo> ?other .
  ?observation <http://purl.org/linked-data/stratos/stratos#observation> ?household .
  ?household <http://data.cso.ie/census-2011/classification/household-size#> ?size .
  ?uri geo:hasCoordinate ?x . ?x geo:asWKT ?wkt .
} limit 10
```

Output Format: KML

View Results: On a map (Geospatial)

Map Bounds: *PUL YSUN (-5.32 52.37, -10.28 52.37, -10.28 53.94, -5.32 53.94, -5.37

Buttons: Query, Update

Results

iri	http://data.geohive.ie/stratos/census2011-electoral/divisions/5176C-5099B564152E0930100007/0280
label	Tuam Rural
other	http://data.cso.ie/census-2011/census/census/ED/27215
observation	http://data.cso.ie/census-2011/dataset/household-by-size/ED/27215_B_of_0006
number	18
x	inodes:aswkt:4.0590

The map shows the location of Tuam Rural in County Galway, Ireland.



Jointly hosting international Geo/Stats conference in 2017

EFGS DUBLIN 2017

HOME ABOUT SPEAKERS SCHEDULE REQUEST TICKET VENUE EVENT INFO GALLERY BLOG HOSTS CONTACT

Search...

2nd & 3rd November - Dublin

10th Annual European Forum for Geography & Statistics

94 Days 1 Hour 28 Minutes 54 Seconds

LIKE TO ATTEND? >

Welcome to the official website of the 10th European Forum for Geography and Statistics (EFGS)

This year's conference takes place in Dublin from 2nd to 3rd November 2017 and is proudly hosted by Ireland's Central Statistics Office (CSO) and Ordnance Survey Ireland (OSi). The partnership between the CSO and OSi is long established and was recently underpinned by a commitment to collaborate in relation to the visualisation of statistical outputs, publishing certain geographies as Linked Open Data and fulfilling Ireland's reporting responsibilities under the United Nations 2030 agenda for Sustainable Development. [READ MORE](#)

Janusz Dynaszewicz
President of EFGS

Colin Bray
CEO - OSi

Padraig Dalton
Director General - CSO

- 230 delegates
- 31 countries
- 5 continents



Developed and launched Ireland's UN SDGs Data Hub

<http://irelandsdg.geohive.ie/>




Ireland, Sustainable Development Goals Sign In

17 Goals to Transform our World

Governments, businesses and civil society together with the United Nations (UN) have started to mobilise efforts to achieve the Sustainable Development Agenda by 2030. Universal, inclusive and indivisible, the Agenda calls for action by all countries to improve the lives of people everywhere.

This is Ireland's public platform for exploring, downloading and combining publicly available data relating to UN Sustainable Development Goals. Ireland's progress against each Goal is measured using a set of globally agreed Indicators and here you can search for, discover and visualise the data we use to create those Indicators.

This platform was developed as part of a partnership between Ordnance Survey Ireland, the Central Statistics Office and Esri Ireland.

Thank You

