



# GRID<sup>3</sup>

GEO-REFERENCED INFRASTRUCTURE AND  
DEMOGRAPHIC DATA FOR DEVELOPMENT

BILL & MELINDA  
GATES *foundation*



world  
pop  
FLOWMINDER.ORG



Center for International Earth  
Science Information Network  
EARTH INSTITUTE | COLUMBIA UNIVERSITY

# Our vision

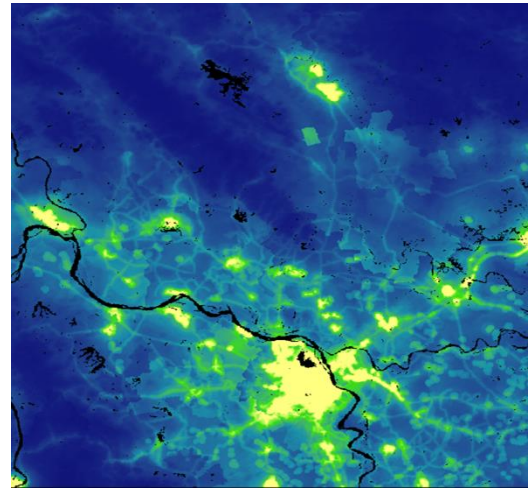
---



*We envision a world where data analytics puts everyone on the map, ensuring that especially the most vulnerable count.*

# What we do

GRID3 provides support to low- and medium-income countries to produce, collect, analyse, integrate, disseminate, and utilise high-resolution geo-referenced data for development and humanitarian decision making.



# Current Focus

GRID<sup>3</sup> is underway within six African countries:

Nigeria

Mozambique

Zambia

Tanzania

Democratic Republic of the Congo

South Sudan



# A Global Partnership



## Funding Partners



Oversight and  
Decision Making

## Implementing Partners



Technical Expertise and  
Capacity Strengthening

## Coordinating/Managing Partner



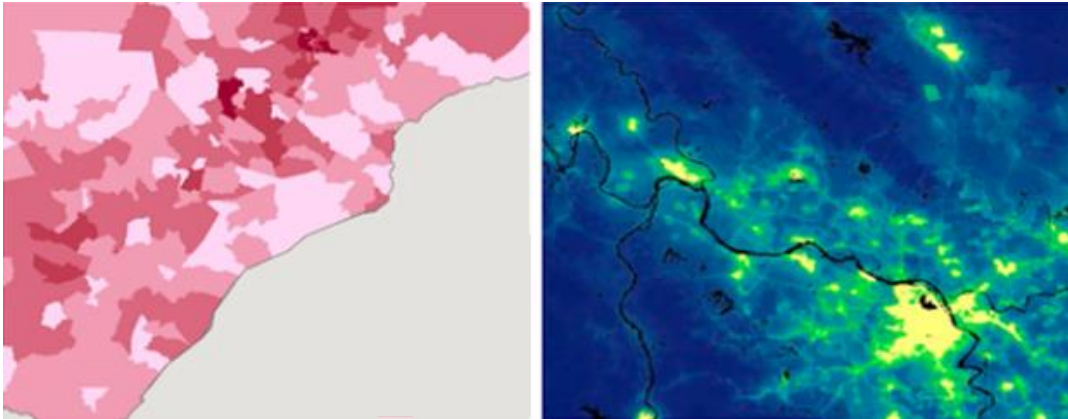
Technical Support and  
Advocacy



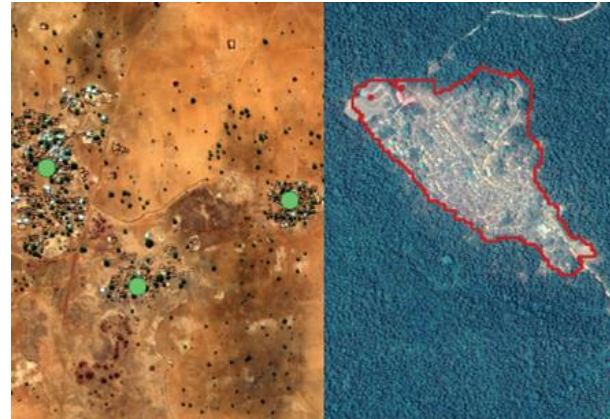
# Spatial Data Production

GRID<sup>3</sup> helps produce three spatial data layers to meet critical development needs:

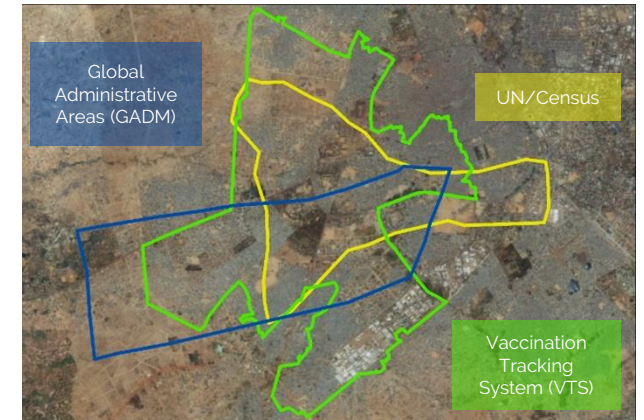
## High-Resolution Population Maps



## Settlement Locations

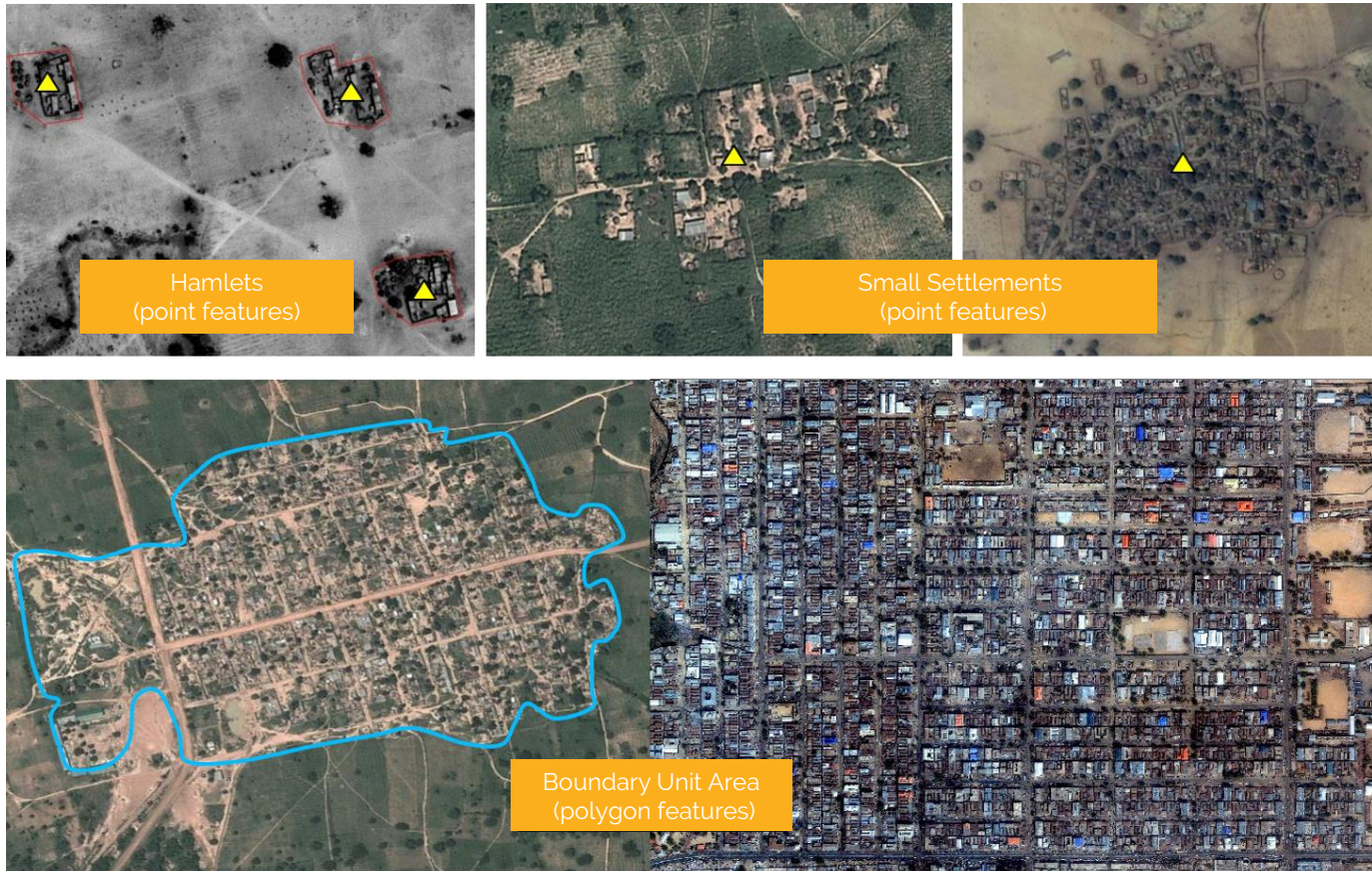


## Subnational Boundaries



# Settlement Locations

Comprehensive settlement locations provide a real world picture of where people live to target service delivery and development investments.



GRID<sup>3</sup> identifies settlements and classifies urban neighborhood types using high resolution satellite imagery.

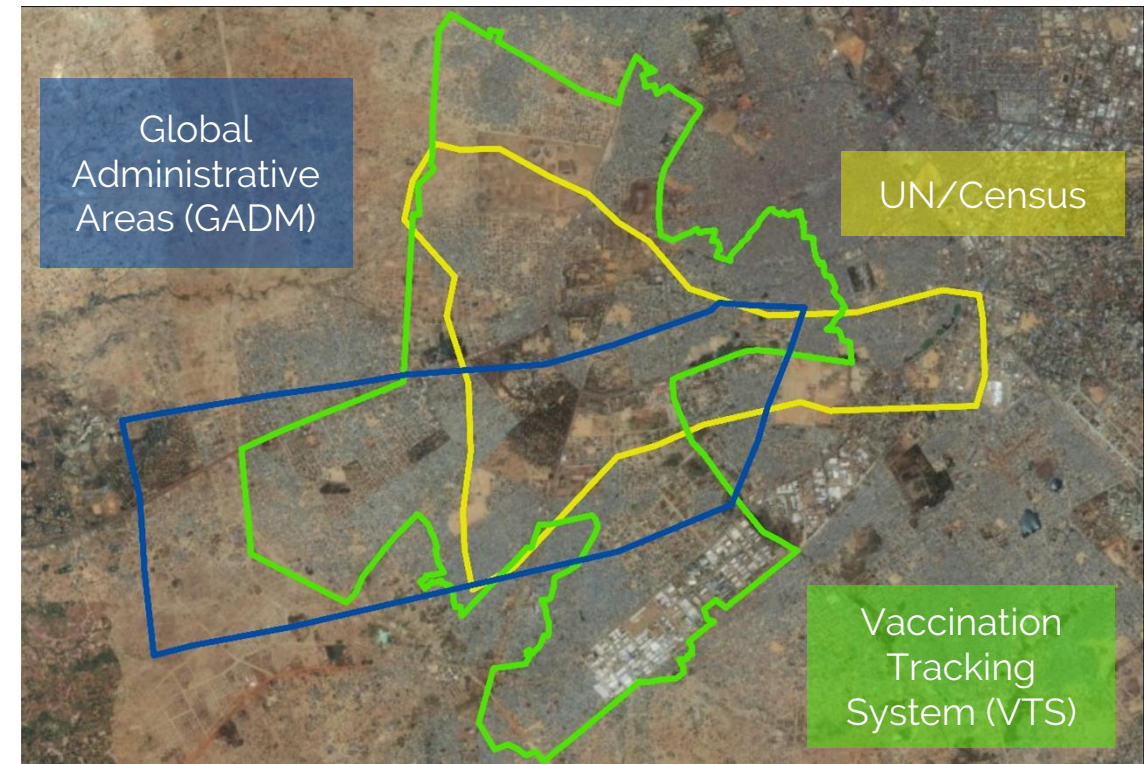


# Subnational Boundaries

Validated administrative boundaries allow for efficient development processes to be planned and implemented in an evidence-based, place-based manner:

GRID<sup>3</sup> provides the methodology to empirically access, edit, and validate sub-national administrative boundaries.

**Various Boundary Sources for Gwale, Nigeria**



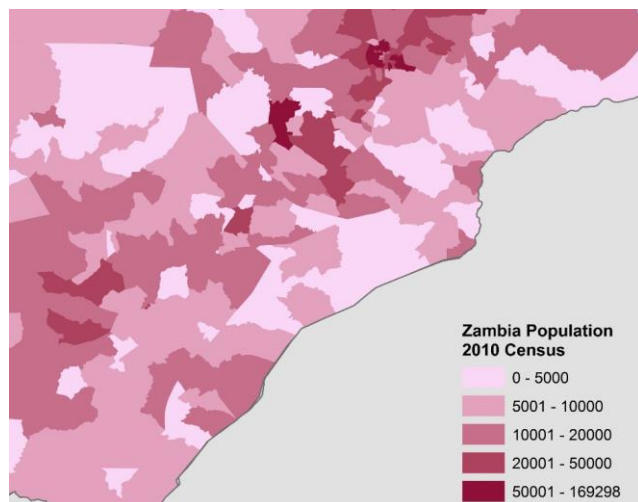


# High-Resolution Population Maps



High-resolution population estimates and demographic characteristics are fundamental to understanding and managing development processes:

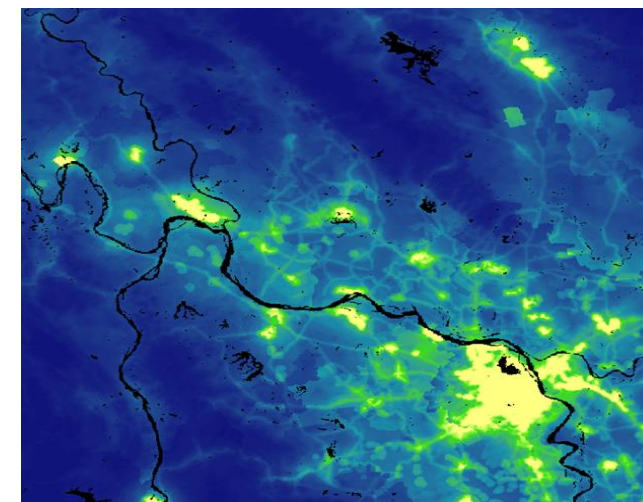
## Census-Based Population Mapping



*Southern Zambia, Ward level  
UNFPA*

Depending on needs and feasibility, we update current population maps using either census or model-based mapping.

## Model-based Population Mapping



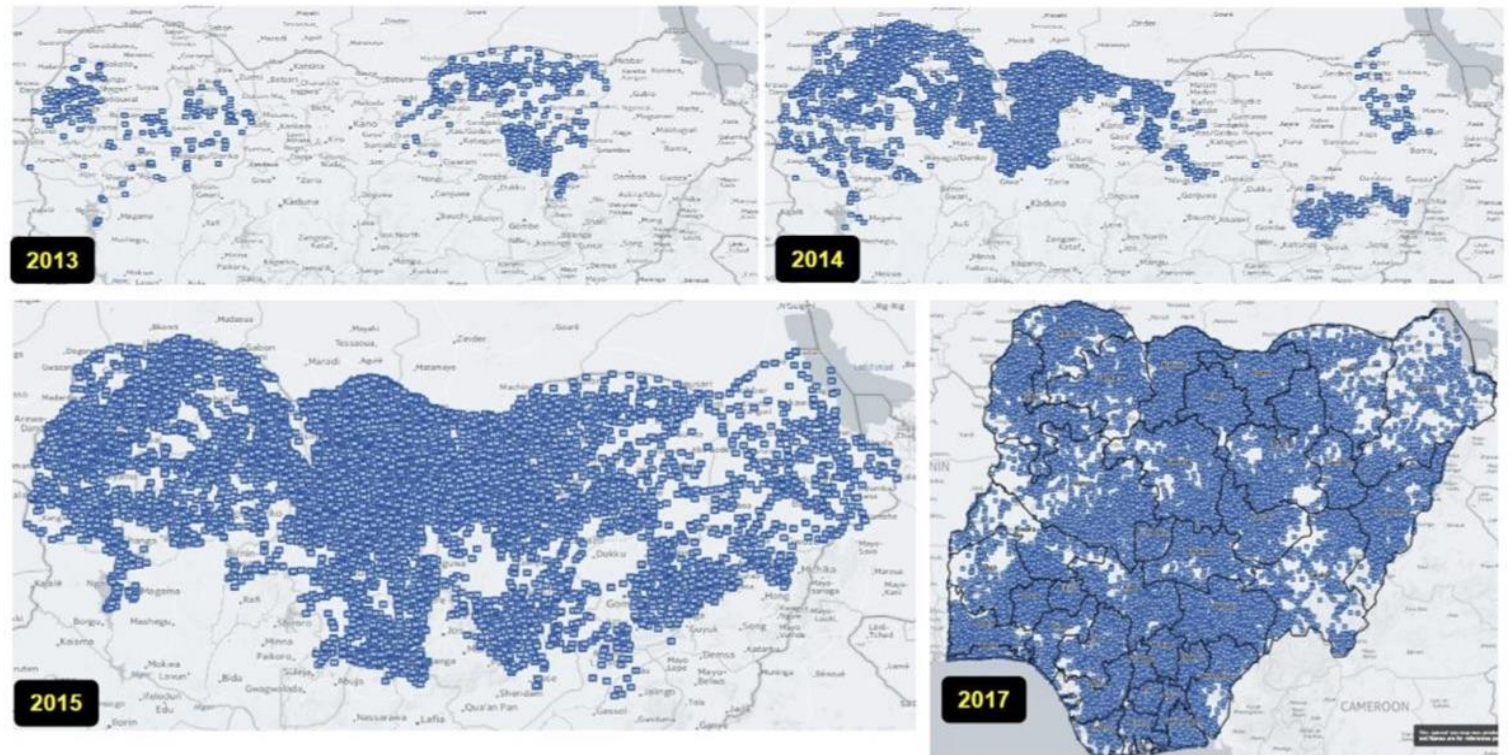
*Northern Vietnam, 100-meter pixels  
WorldPop/Flowminder*

# Other Spatial Data Improvements

GRID3 can also target and produce other spatial data layers depending on a country's current needs or desires:

## Nigeria: Update of health facility locations (2013 to 2017)

**Mapping infrastructure** locates development investments in space. It makes possible full integration of development planning and monitoring with other spatial reference data.



---

# **GRID<sup>3</sup> Zambia** **Implementation**



# 2010 Census of Population and Housing

---



- The fifth national population census that Zambia
- Completed by 30th November 2010
- Paper based

## **Next Census - 2020:**

- Preparations under way
- Geo-referenced to household level

# GRID<sup>3</sup> Zambia: Overarching Goal

---



To strengthen national geospatial capacity, and promote effective coordination across government actors, donors, the private sector, academia, and NGOs for collection, processing and utilisation of such data in support of national development efforts.

## Key stakeholders

- Central Statistical Office Zambia (CSO)
- Ministry of National Development Planning
- Ministry of Lands
  - Surveyor General's Office
  - National Spatial Data Infrastructure(NSDI)- Committee comprises 15 Governments Departments
- University of Zambia
- UN Country team
- Development partners



# Priorities for GRID<sup>3</sup> support to Zambia

---



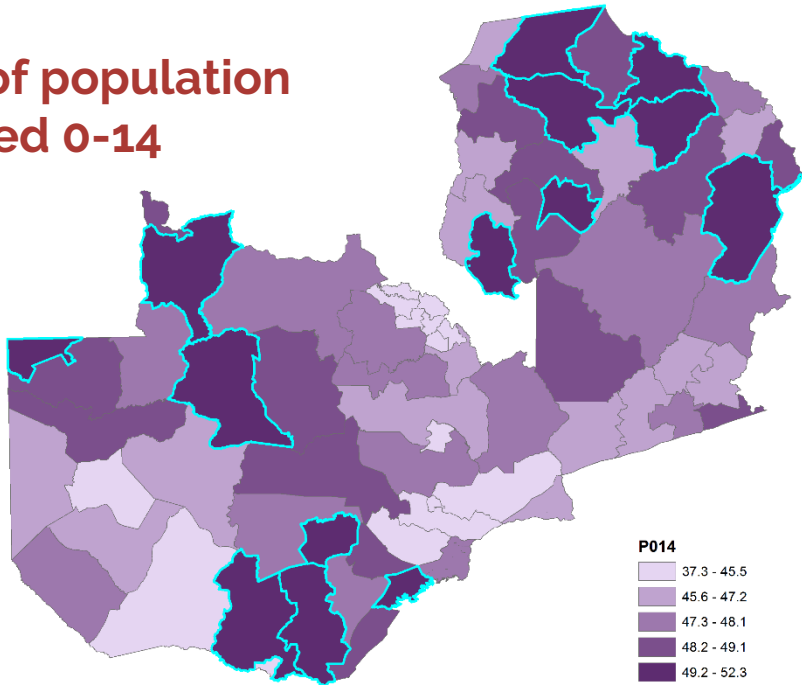
1. Support the National Spatial Data Infrastructure
2. Population estimation in pre-enumeration phase of the 2020 census
3. Strengthening capacity to collect, manage and utilise georeferenced & geospatial census data

# **GRID<sup>3</sup> Zambia**

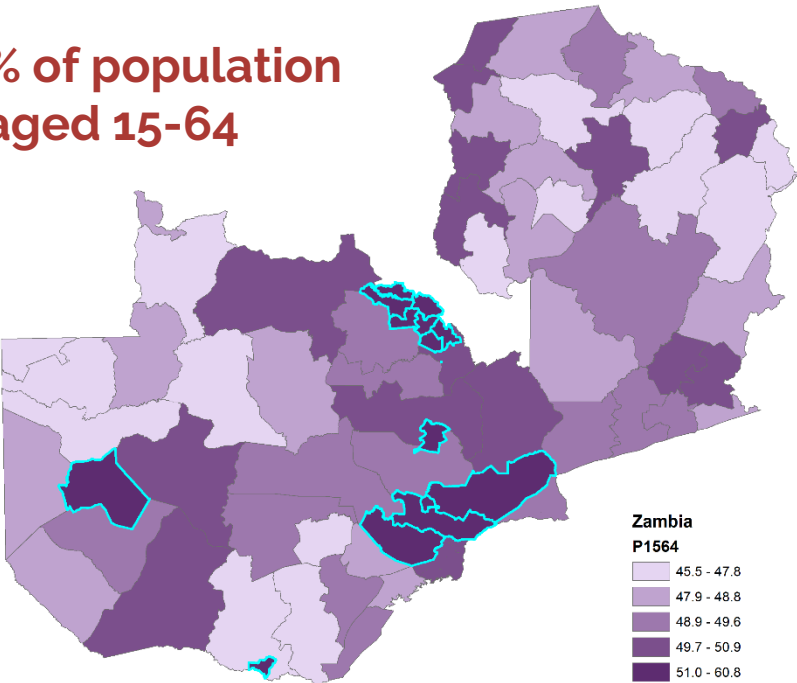
## **Expected outputs - Examples**

# Using 2010 census for the 7th National Development Plans

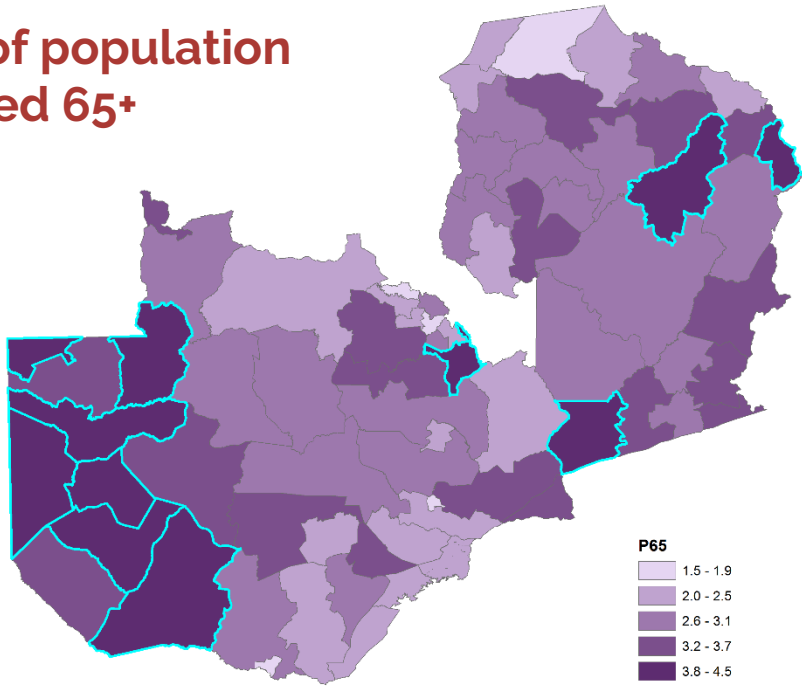
% of population aged 0-14



% of population aged 15-64



% of population aged 65+

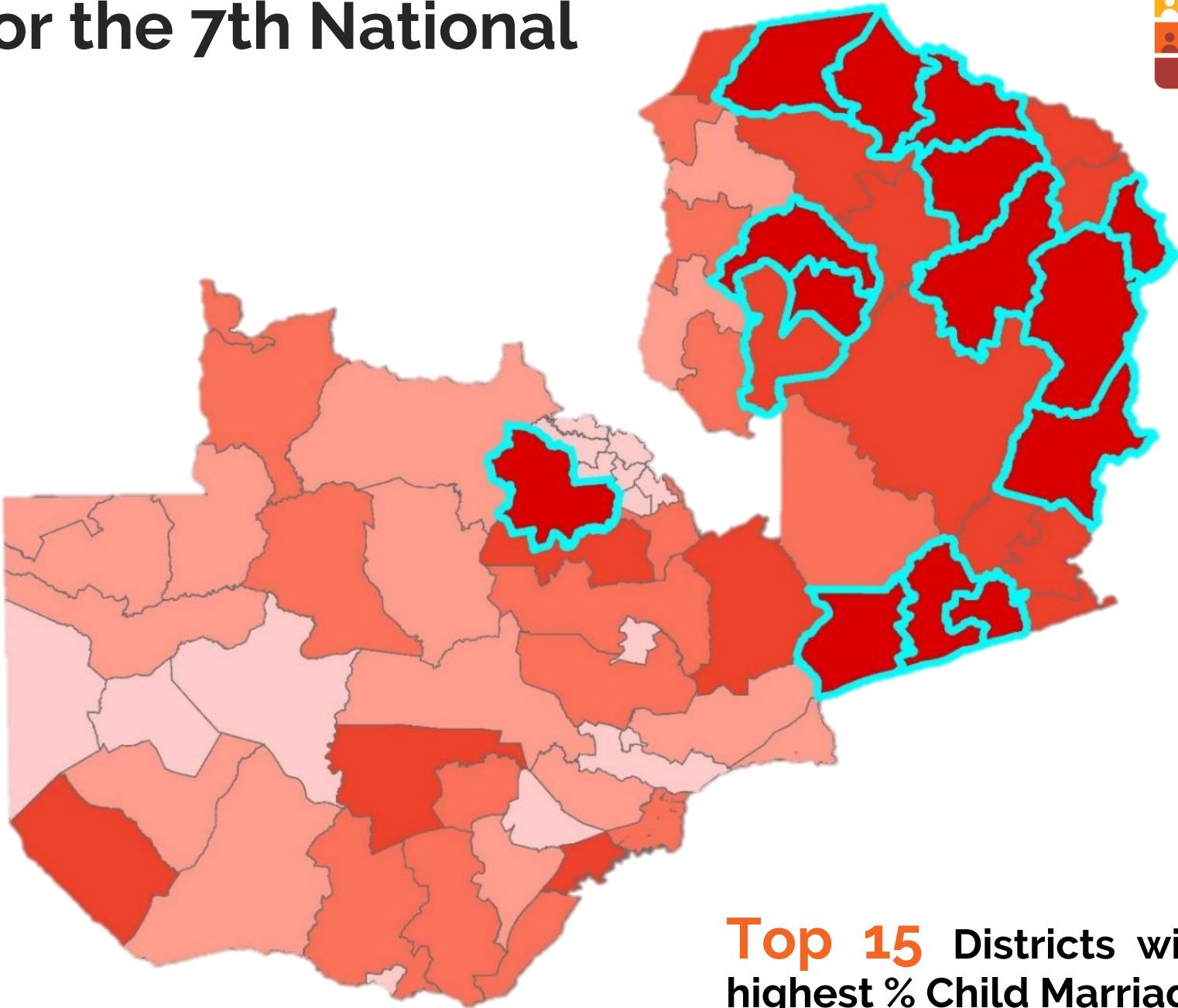
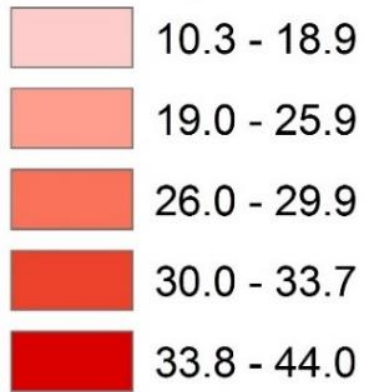




# Using 2010 census for the 7th National Development Plans



Percentage of women  
aged 18-24 married  
before age 18



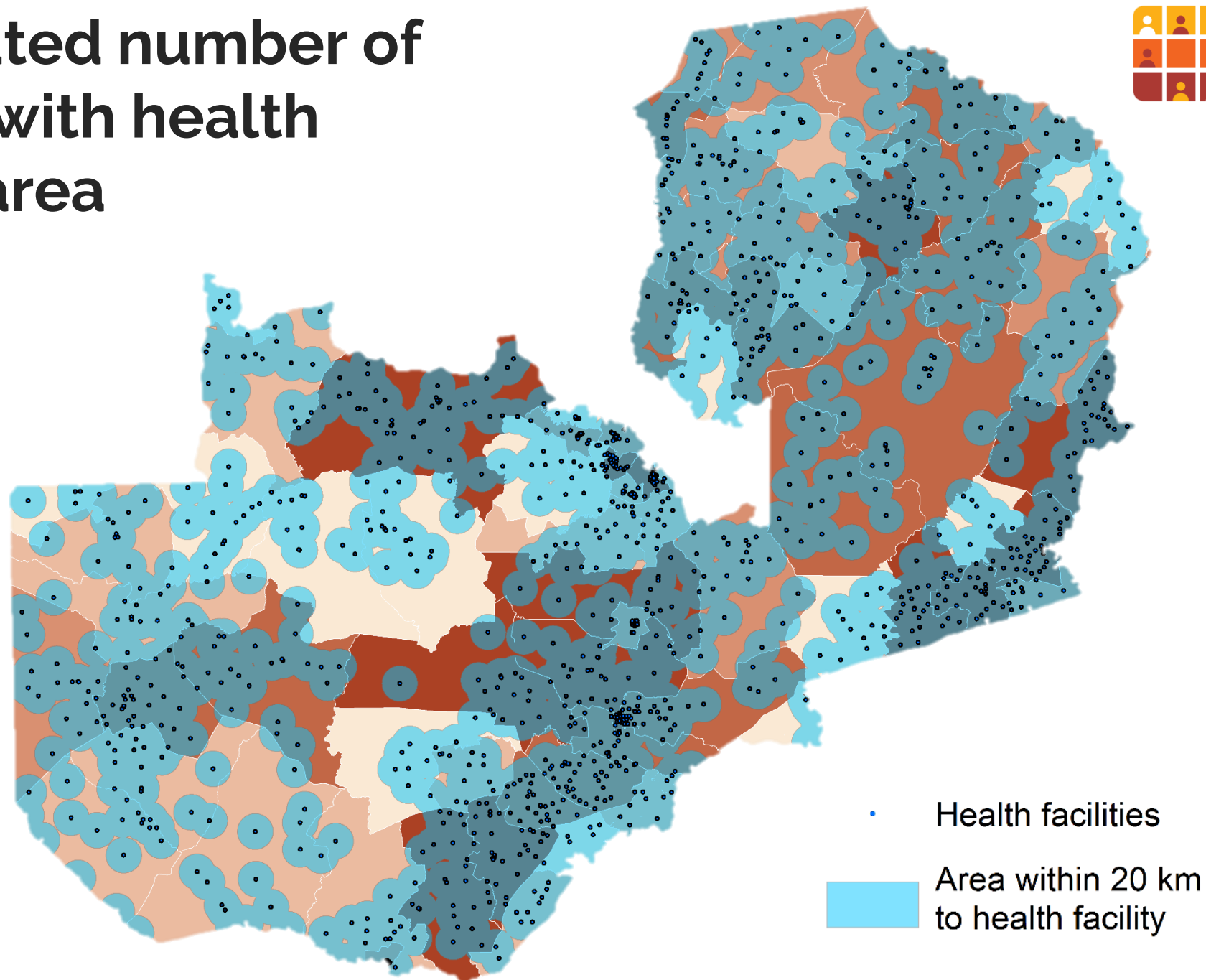
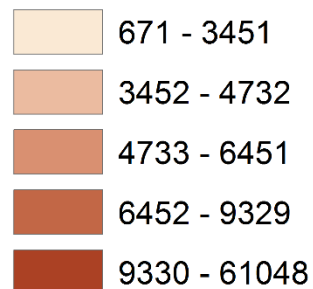
-- Example of key indicator:  
Child Marriage

**Top 15** Districts with  
highest % Child Marriage

# Overlaying estimated number of pregnant women with health facility coverage area



Estimated number of pregnant women based on PUMS census





# GRID<sup>3</sup>

GEO-REFERENCED INFRASTRUCTURE AND  
DEMOGRAPHIC DATA FOR DEVELOPMENT

For more information, contact us: [info@grid3.org](mailto:info@grid3.org)

Or visit: [grid3.org](http://grid3.org)

**For project updates and announcements, follow the partners on Twitter or #GRID3**

@Flowminder, @WorldPopProject, @PopDevUNFPA, and @CIESIN