

Mr. Jure LEBEN

Minister for Environment and Spatial Planing of the Republic of Slovenia



**I FEEL
SLOVENIA**

SLOVENIA is



Home of 2.010.000 inhabitants

Area of 20.273 km²

Land parcels 5.266.803

Buildings: 1,161.407 mio

Hous numbers: 536.616

Settlements: 6031

Wooded area: 66%

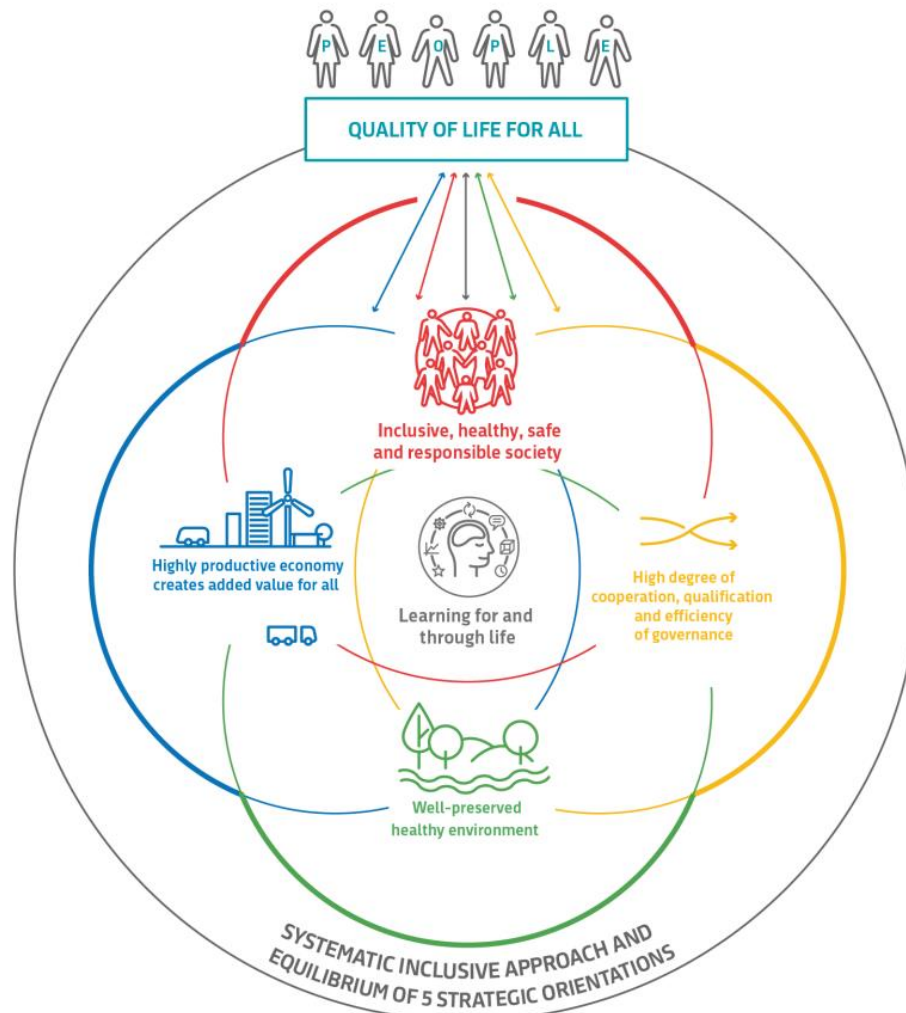
Coastline: 46 km





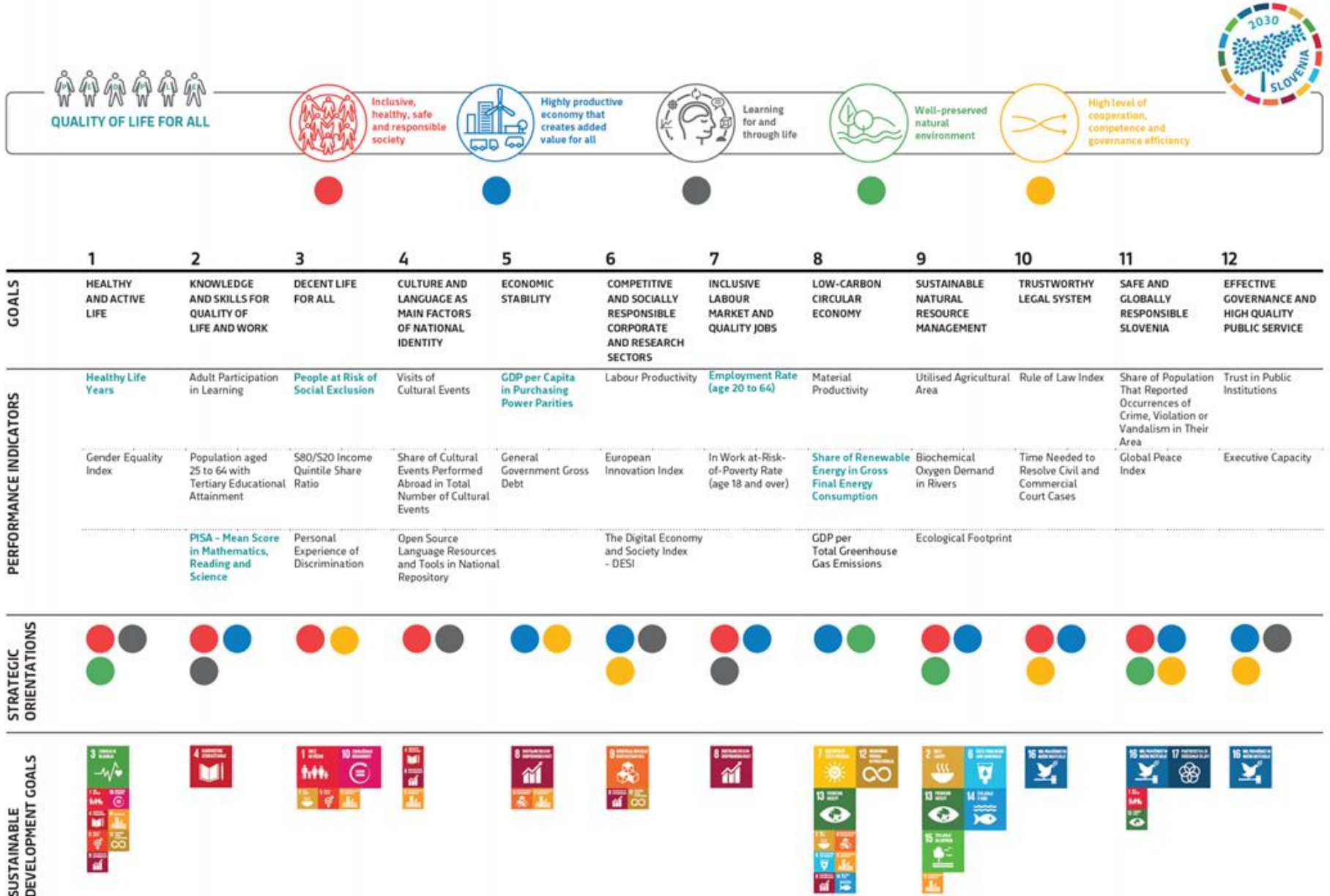
Slovenian Development Strategy 2030

OVERVIEW



- inclusive, healthy, safe and responsible society,
- learning for and through life,
- highly productive economy that generates value added for all,
- well - preserved natural environment
- high level of cooperation, competence and governance efficiency

Slovenian development strategy 2030



Slovenia's Smart Specialisation Strategy

S4



TABLE OF CONTENTS

WHAT IS S4	5
VISION AND STRATEGIC OBJECTIVES	6
1.1. What is the state of play	6
1.2. Objectives: where are we headed	8
1.3. How do we get there – S4 concept	8
2. S4 PRIORITY AREAS	9
2.1. HEALTHY WORKING AND LIVING ENVIRONMENT	13
2.1.1. Smart cities and communities	13
2.1.2. Smart buildings and homes, including wood chain	15
2.2. NATURAL AND TRADITIONAL RESOURCES FOR THE FUTURE	17
2.2.1. Networks for the transition to circular economy	17
2.2.2. Sustainable food production	19
2.2.3. Sustainable tourism	20
2.3. (S)INDUSTRY 4.0	22
2.3.1. Factories of the Future (FoF)	22
2.3.2. Health – medicine	24
2.3.3. Mobility	26
2.3.4. Development of materials as end products	27
3. INTERNATIONAL DIMENSION – HORIZONTALLY	29
4. POLICY MIX	32

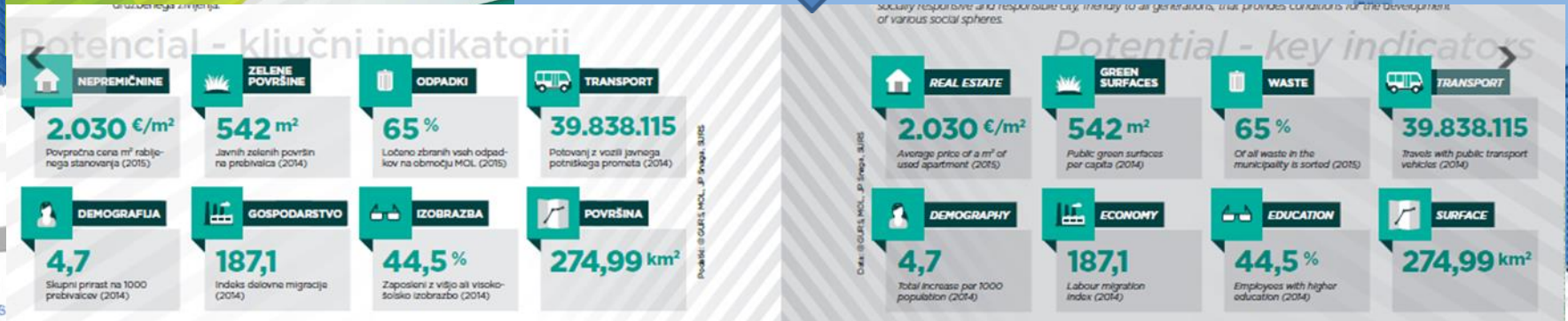


Our understanding of smart cities?



Development opportunities of Slovenian Municipalities

- Smart City Platform for participatory governance



Partnership for a green economy focuses on smart management of resources in cities



CONNECTED FOR GROWTH

Transition to a Green Economy in Slovenia

SUMMARY



10) SUPPORTING E-ACTIVITIES:

- E-SPACE
- E-WATERS
- E-ENVIRONMENT

Effective decision-making and management of the physical space and environment, along with ensuring green growth, require the establishing of a modern data infrastructure through which a standardised, rapid, and easily accessible system provides high-quality data on the physical environment, and on services related to it. In order to analyse and process data in various processes, we need to establish a modern geographical information system on the national level.

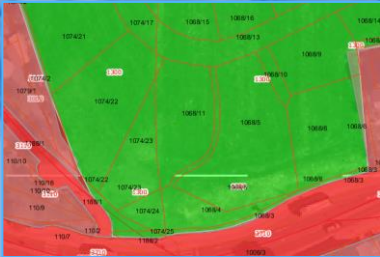


Geospatial information to shape and develop smart, resilient and sustainable cities and societies in Slovenia

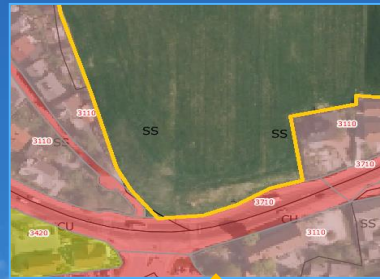


„Life cycle“ of e-Spatial

1. LPIS



2. Spatial plan



3. Land development plan



4. Land cadastre



7. Building cadastre

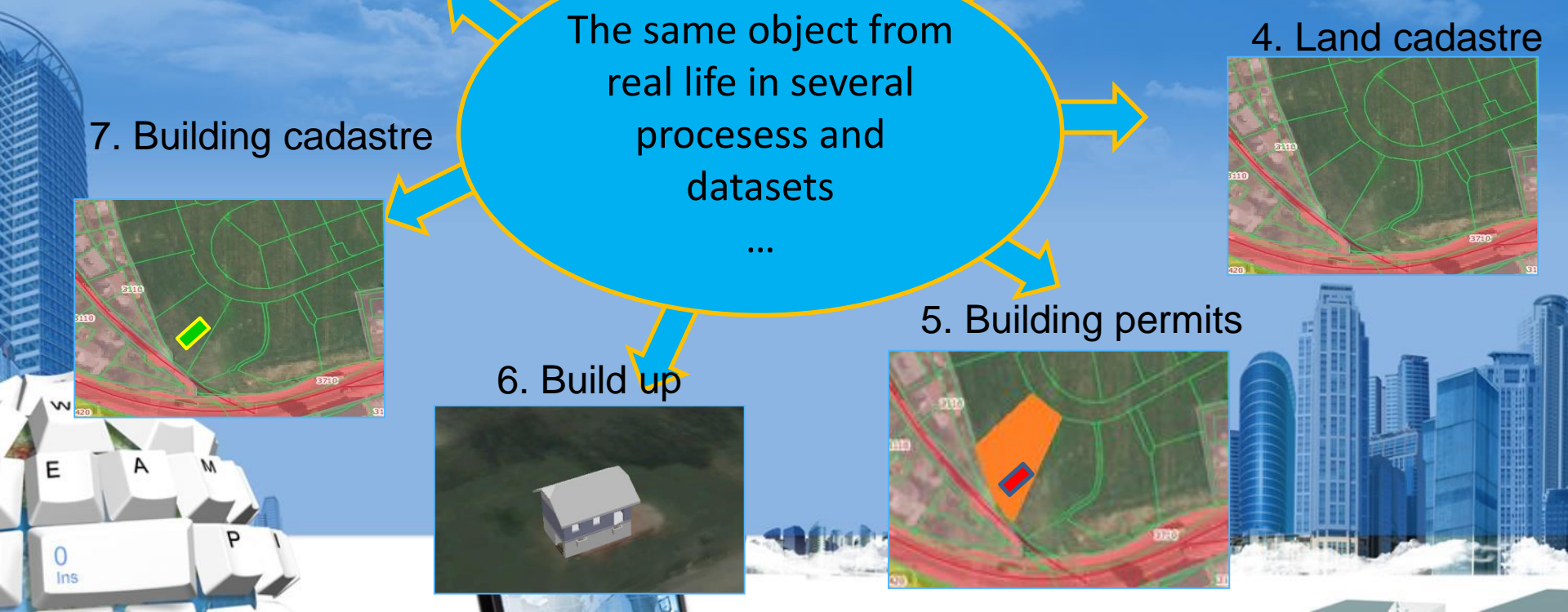


The same object from
real life in several
proceses and
datasets
...

5. Building permits

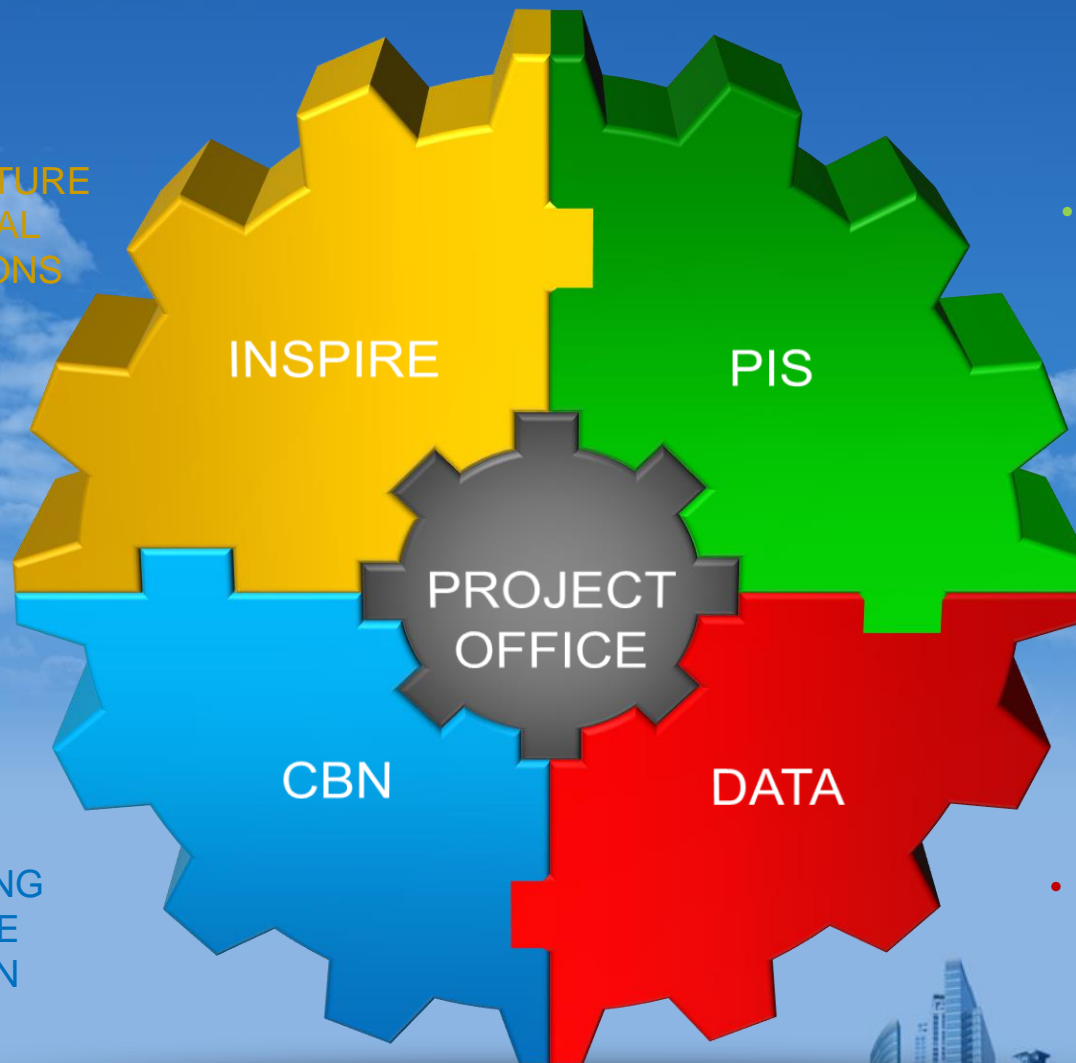


6. Build up



E-Spatial program of projects

- INFRASTRUCTURE FOR SPATIAL INFORMATIONS



- ESTABLISHING OF SPATIAL PLANING INFORMATION SYSTEM

- PROJECT MANAGEMENT SUPPORT

- REENGINEERING F REAL ESTATE REGISTRATION DATABASE

- IMPROVEMENT OF QUALITY AND DATA COLLECTION



eProstor
EN PROSTOR ZA VSE



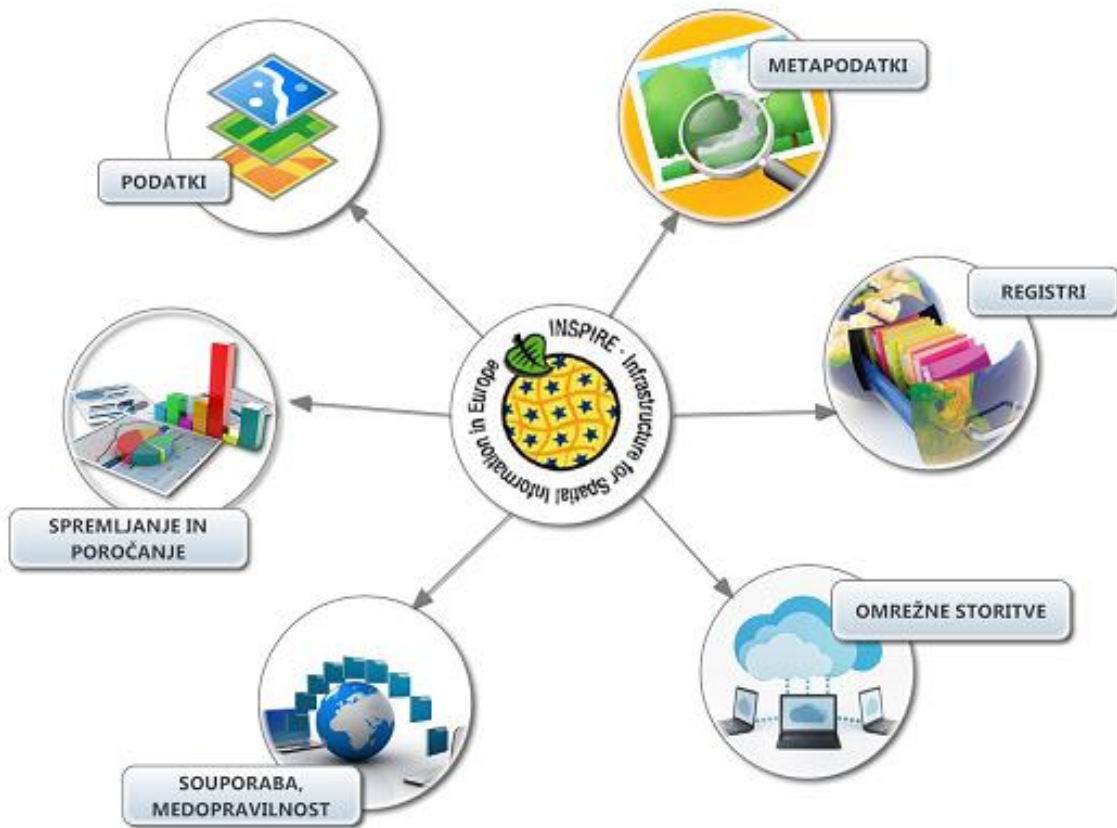
EVROPSKA UNIJA
EVROPSKI SKLAD ZA
REGIONALNI RAZVOJ
NALOŽBA V VAŠO PRIHODNOST



INFORMATION INFRASTRUCTURE FOR SPATIAL DATA

eProstor
EN PROSTOR ZA VSE

EVROPSKA UNIJA
EVROPSKI SKLAD ZA
REGIONALNI RAZVOJ
NALOŽBA V VAŠO PRIHODNOST



DATA



Spatial Information System

Državni prostorski akti - Državni prostorski načrti

Atribut	Vrednost
Enolični ID DPN	160

...gli načrt za rekonstrukcijo daljnovega 2 A7 400
pdllog
t. 50/16-2178

Sloji

- Vsi sloji
- Aktivni sloji
- Državne karte
- Ortofoto načrti
- Zemljiški kataster
 - Parcelni deli
 - Parcele
 - Katastrske občine (cbzk)
- Kataster stavb
- Register prostorskih enot
- Zbirni kataster GJI
- Kmetijska zemljišča
- Prostorski akti
- Varstvo narave
- Varstvo voda
- Poplavna ogroženost
- Varstvo gozdov
- Varstvo kulturne dediščine
- Upravni akti
 - Gradbena dovoljenja
 - Uporabna dovoljenja
 - Inšpekcijske odločbe

Merilo in koordinate

Merilo: 25000
Koordinate: 548251.42, 158632.68

Rezultati iskanj

SPATIAL INFORMATION SYSTEM

PIS

Investitor:	
Naslov:	
Vrsta objektov:	nezahtevna objekta: - pomožni kmetijsko-gozdarski objekt - kmečka lopa - objekt za lastne potrebe - garaža
Na zemljišču parc. št.	1377/12 in na zaidalnem delu parcele 1315
Katastrske občine:	Bukovje
Veljavnost:	Gradbeno dovoljenje za gradnjo nezahtevnih objektov preneha veljati, če investitor ne prične graditi v enem letu od njegove pravnomočnosti. Kmečka lopa , bo enoetažna, pritična, namenjena shranjevanju kmetijske mehanizacije, katere streha je hkrati strop nad prostorom, Pravokotne tlorisne oblike, maksimalnih dimenzij 5,0 m x 6,0 m, višina najvišje točke bo 3,50 m, merjeno od najnižje točke objekta. Simetrična, dvokapna streha bo krita z opečno kritino Bramac . Objekt bo lesen z betonskim tlakom. Garaža , bo enoetažna, pritična, katere streha je hkrati strop nad prostorom, namenjena shranjevanju osebnih motornih vozil, tlorisnih

Page: 1 of 3 Words: 1.274 Slovenian 99%

Informativni

Informativni vpog podatke o državi graditve objektov.

Preko storitve so aktih in tistih v pri, občinskih prostorskih načrtov in prosto podrobnih izvedbenih aktih, podatki o upra (gradbena in uporabna dovoljenja, s prav omejitvah v prostoru (natura 2000, zavar območja, vodovarstvena območja, gozdni kulturne dediščine) in nepremičninski po meje naselij, zemljiški kataster in kataster s

Skok na storitev



REENGINEERING OF REAL ESTATE REGISTRATION DATASETS

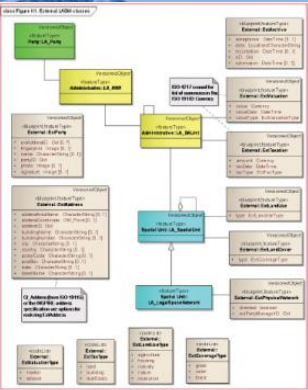
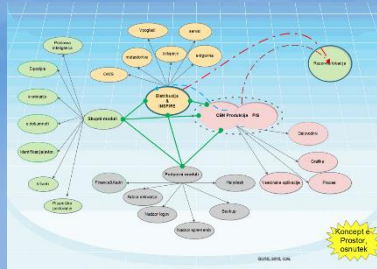
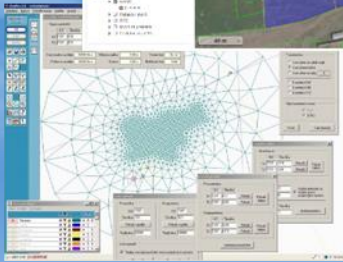
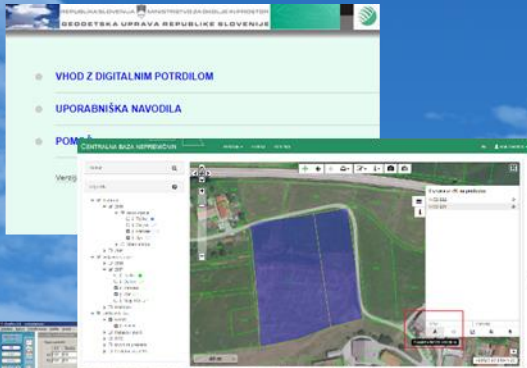
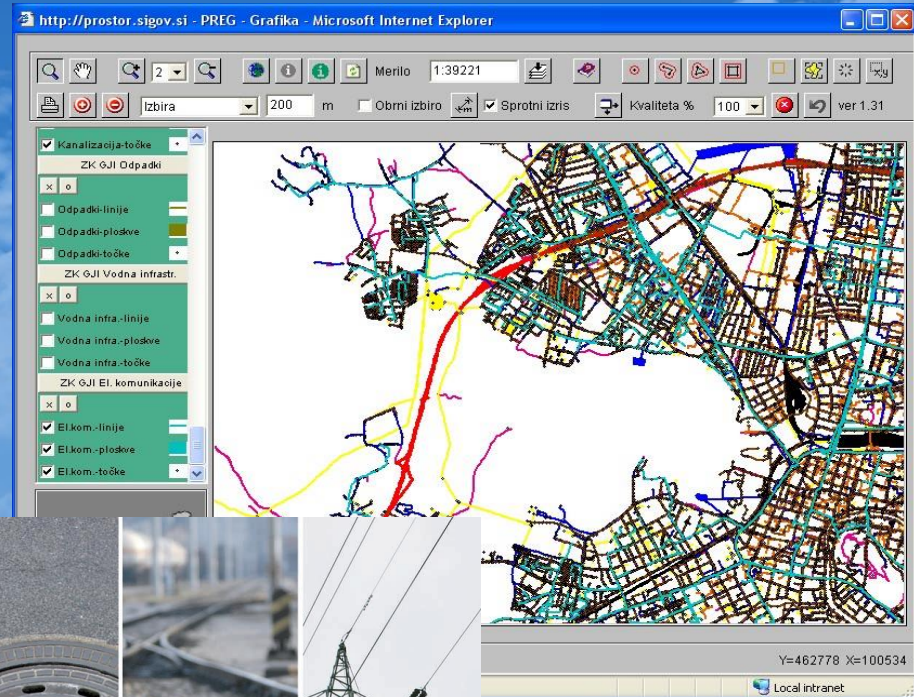


Figure 1: LADM Core classes (in color and 'LA_' prefix) and LADM external classes (with 'EA_' prefix), taken from ISO 19152:2012

What is underground?

Consolidated cadastre of public infrastructure



Conclusions...

